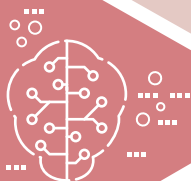


Department of Psychology





About the Department

Our department has a long history in Korean Psychology, tracing its origin back to 1953. We are the recipient of the highly competitive government grant (BrainKorea21^{PLUS}) and offer scholarships for our graduate students through the “Research Team for Promoting the Symbiotic Flourishing of Individuals and the Community.”

SKKU Psychology Department was listed as one of the only four Korean universities that ranked in the bracket of 151-200 (QS 2017). We have international collaboration networks with leading psychology programs, providing graduate students with a variety of research and learning opportunities. Our department also houses the Institute of Applied Psychology. This research institution was first launched in 1995 and has been contributing to the application of psychological science to resolving important social issues.

Facts

8

Faculty Members

31

Graduate Students

605

Undergraduate Majors

181

International Students
(China, Japan, and Finland)



Lab Activities

- Dr. Suh’s lab focuses on researching the effect of organizational members’ spirituality on motivation, satisfaction, and happiness as well as its influence on job-crafting behavior, leadership, performance, and organizational culture.
- Dr. Choi’s lab is composed of talented students and junior researchers who study group processes and intergroup relations with a great deal of enthusiasm. This lab has been developing a new model of individualism-collectivism that allows a comprehensive understanding of the dynamic interplay between group psychology and cultural psychology.
- Dr. Chang’s program conducts research on various topics in clinical psychology including the development of various mental disorders as well as their diagnosis/assessment and prevention/treatment. Particularly, this lab is interested in clarifying how multiple risk and protective factors conjointly contribute to the onset and maintenance of psychopathologies.
- Dr. Kang’s lab studies neurocomputational mechanisms of memory by using EEG and fMRI. Particularly, this lab seeks to identify how short and long-term memory representations are distributed over functionally specialized brain areas.
- Dr. Jahng’s lab studies the development, evaluation, and application of advanced quantitative methodologies. This lab focuses on issues related to the measurement of individual differences and analysis of multivariate, multilevel, and/or longitudinal data using advanced statistical models.
- Dr. Park’s lab focuses on illuminating the mechanisms of stressor-strain relationships and recovery from job stress. The goal is to build healthy workplaces for promoting the wellbeing of workers and thereby productivity for their organizations.
- Dr. Kim’s lab combines cognitive psychology, functional neuroimaging (fMRI), and computational tools to understand how emotional information is integrated in the human brain and its implications for mental health (e.g., anxiety).

SKKU Ranking & Facts

88

2021
QS World University
Ranking #88

10

2021
THE Asia University
Ranking #10

01

2020
#1 Private Comprehensive
University in JoongAng
Daily University Ranking

02

2020
#2 The Top 1% Most Cited
Articles among Korean
Universities in National
Research Foundation

01

2020
#1 National Customer
Satisfaction Index for
14 consecutive years

110

SKKU & Samsung –
110 joint research projects

754

International Partnership
with 754 universities in
74 countries worldwide

1398

Founded in 1398
Oldest University in
East Asia



Department of Psychology

#62605 Suseon Hall Annex Humanities and Social Sciences Campus
25-2 Sungkyunkwan-Ro, Jongno-gu, Seoul 03063, Republic of Korea



E-mail: psydepart@skku.edu



Tel: +82-2-760-0485



Website: <https://psych.skku.edu/>

